

ACTION 2012: Social Renewal

Launch event
21st February 2012
12:00 – 14:00

Welcome

12:00	Introduction - Dr Bryn Jones Dean of Postgraduate Studies Faculty of Science, Engineering & Agriculture
12:10	The Challenges of Social Renewal - Professor Gerry Docherty Dean of Research, Innovation and Business Development Faculty of Humanities & Social Sciences
12:25	The ZapZyme team experience Chelsea Brain & Matthew Abbott ACTION 2011: Sustainability winners
12:35	Programme details – The ACTION team Gail de Blaquièrre, Elizabeth Scanlon & Katie Wray
12:45	Lunch, networking and informal Social Renewal challenge discussions

Introduction

Dr Bryn Jones

John Baird

Head of Knowledge Transfer - EPSRC

“EPSRC wishes to ensure increased and accelerated impact and exploitation from its investments. To help increase awareness and encourage innovative approaches to the exploitation of research, EPSRC has provided funds to support training in the area of entrepreneurship. Newcastle’s ACTION 2011, aimed at exploring a sustainability challenge, appears to be a welcome step in progressing this important agenda”

ACTION 2012:
Social Renewal



The ACTION Team

- Katie Wray
- Elizabeth Scanlon
- Bryn Jones
- Gail de Blaquièrre



ACTION 2012:
Social Renewal

ACTION 2011: Programme Summary

- 9 Month Programme
 - supported by EPSRC and NIREs
- 23 researchers
- 3 Enterprise Training Labs
- Mixture of Internal and External Facilitators
- 6 Teams with Sustainability Ideas
 - *Enough, For All, Forever*
- Mentor support
- Teams completed a business summary
- Teams pitched to a panel of 10 judges at the showcase

The 2011 Winning Team...

ZapZyme WINNERS

Matthew, Chelsea, Nithy,
Rekha, Gabriel

ZapZyme Technology - a
novel enzyme for process
cleaning



The 2011 Runners Up...

TeraTura RUNNERS UP

David, Jared, Ryan, Jen

TeraTura is a consultancy connecting tourism and sustainability science through innovative IT solutions



ACTION 2012:
Social Renewal

What's in it for you, the researchers?

- Engage with the 2012 societal challenge theme
- Demonstrate the impact and excellence of your research to wider society
- Form new cross-disciplinary research networks
- Develop an innovative solution to a real problem
- Benefit from mentoring by experienced academics and entrepreneurs
- Increase your awareness of the commercial impact of your research

ACTION 2012: Social Renewal

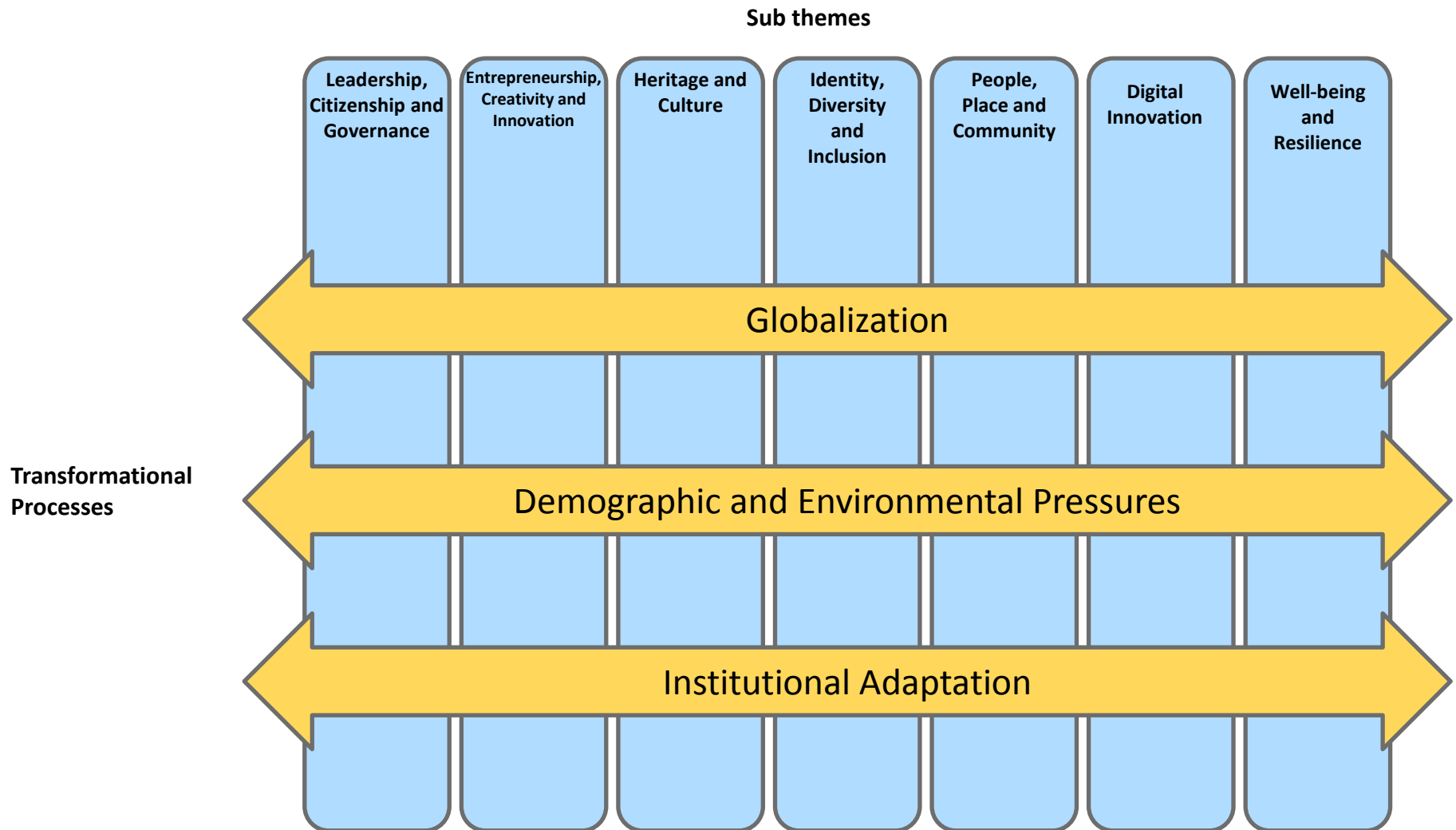
How can societies and communities thrive when faced with rapid, transformational change?

- e.g. Post-war shift in UK economy from Manufacturing to Services
- Current government wishes to re-balance this
- None of this will happen without entrepreneurial skills to turn this into a reality
- ACTION 2012: Engineering and Physical Sciences ideas in support of Social Renewal

The Challenges of Social Renewal

Professor Gerry Docherty

Societal Challenge Theme 3: Social Renewal



Team ZapZyme winners of **ACTION 2011: Sustainability**



EPSRC

Engineering and Physical Sciences
Research Council



**ACTION 2011:
SUSTAINABILITY**

Competition outline

- ➡ Design, develop and commercialise a product relating to sustainability as a team over 9 months.
- ➡ Prizes: Winner: £10,000 development fund (£5,000 runner-up).
- ➡ 3x 2-day workshops: team building, idea development, business planning.
- ➡ Access to additional training sessions.

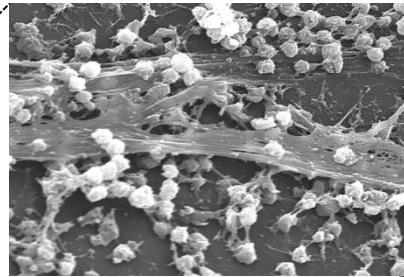
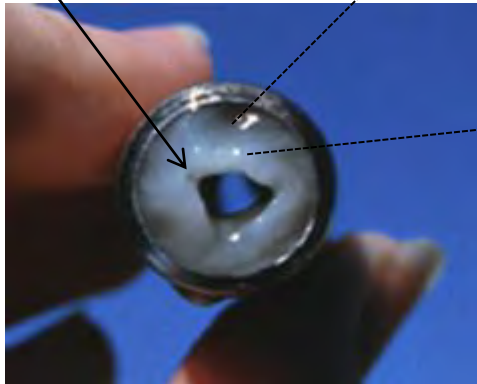


Our product - ZapZyme

An enzyme with a novel mode of action for biofilm dispersal.



Biofilm



Biofilm Composition

- Water <97%
- Microbial Cells 2-5%
- Sugars 1-2%
- Proteins 1-2%
- **DNA 1-2%**

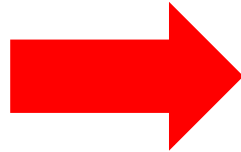
Only enzyme targeting DNA for biofilm dispersal – patent pending.

The problem

During Fermentation



Biofilm formed



New Fermentation



Biofilm removed

1. Sodium Hydroxide

2. 70 °C

3. Water

Energy and cost



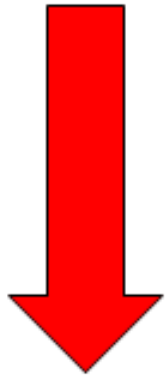
**ACTION 2011:
SUSTAINABILITY**

The solution: ZapZyme

A sustainable and environmentally-friendly cleaning technology for breweries

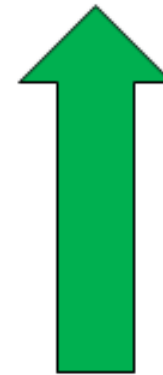
[Prezi demonstration...](#)

Benefits:



Reduces

- ↓ Corrosive chemicals
- ↓ Energy
- ↓ water



Increases

- ↑ Safety
- ↑ Savings
- ↑ Sustainability

ACTION 2011:
SUSTAINABILITY

The business



Engage industrial partners for on site testing – Heineken.



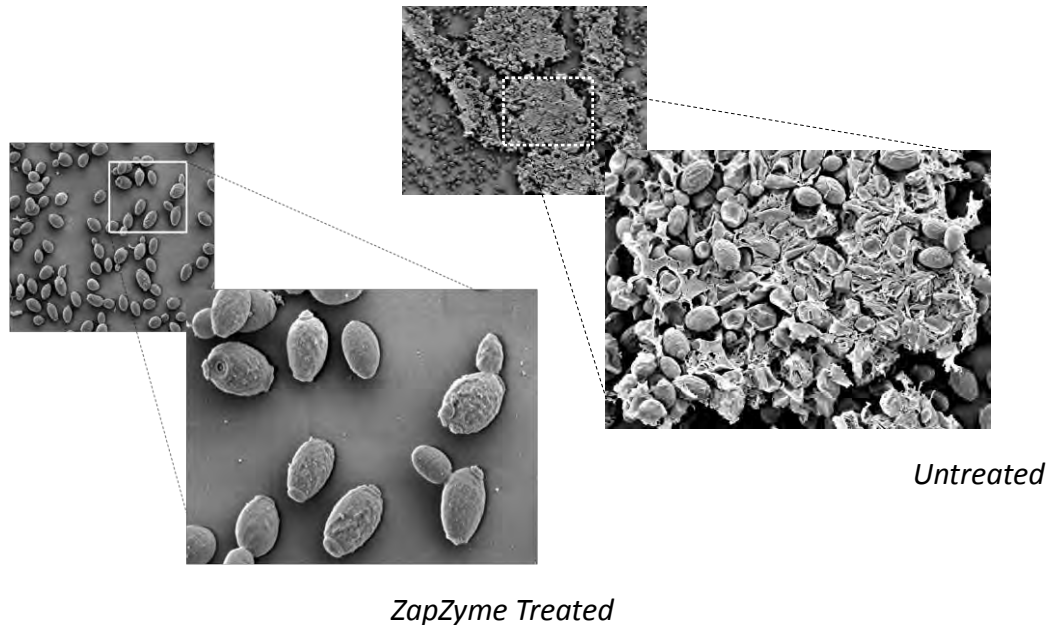
ZapZyme – R&D and IP capture



Sell field licence to appropriate manufacturing company – 5% royalty fees.

Competition progress

- ** Used checkpoint funding to generate photos and results to present at the showcase.
- ** Developed the idea as a team around our skill sets.
- ** Built up a list of industrial contacts.
- ** Established a good working relationship with Heineken.
- ** Market research carried out.
- ** Business plan written.



The team



The showcase final Nov 2011



- ★ Great North Museum
- ★ Stall
- ★ Talked to public
- ★ Formal pitch to judges
- ★ Presentation of business plan



**ACTION 2011:
SUSTAINABILITY**

What we took away from Action 2011



“Action 2011 gave us the opportunity to work in a team on a research-based business project. It has exposed us to the commercial environment, giving us a different and exciting aspect to view our own research from”.

Matthew Abbott (2nd year EngD)

ACTION 2012: Social Renewal Programme Outline

The ACTION Team

What is ACTION 2012: Social Renewal?

- A 10 month programme in which teams of researchers compete to develop a commercial solution to a social renewal challenge
- Teams attend 1 residential and 4 1-day 'Lab Sessions' (plus other support opportunities) to help them develop their proposal
- Teams present their solution and compete for up to £10,000 first prize (£5,000 second prize)

ACTION 2012 Key Dates

16 March	Application Deadline
18 – 19 April	Lab 1 (residential at Beamish Hall Hotel)
21 May	Lab 2 (Dove Marine Laboratory)
18 June	Lab 3 (HaSS Postgraduate Training Suite)
20 August	Lab 4 (Great North Museum)
17 September	Lab 5 (Devonshire Building)
8 November	Showcase Event (Great North Museum)

Teams

- Competing teams of 4 or 5 members
- Interdisciplinary teams made up of both research staff and research students
- Teams formed/formalised during the first Lab at Beamish Hall Hotel on 18 – 19 April

Lab 1 (18th & 19th April 2012)

- 2 day Residential at Beamish Hall Hotel
- Teams formed by end of first day
- Exploring challenges and ideas for projects



Social Renewal Solutions

- What is the impact of what we do
 - Civic University
- SiDE - Addressing poor health, disability, family breakdown, poverty and unemployment – realising the potential for digital technologies
 - Ambient Kitchen
 - Sensors and Activity Recognition
 - Interactive and Mobile Workshops
 - Surfaces and tabletops
- Intelligent Transport – embedding communications and IT (cross-University)
- Electronic cheques (Culture Lab)
- Great North Build – create your ideal town (School of Architecture, Planning and Landscape)

Checkpoint – before lab 2

- Teams submit draft proposals
- Projects checked for viability and relevance to EPSRC remit
- Modest funding is available to support the development of a visual representation of approved projects for the showcase

Labs 2 and 3

Lab 2 (21st May 2012)

- The Enterprising Researcher
- Building the best team

Lab 3 (18th June 2012)

- The commercial development process
- Building an action plan

Labs 4 and 5

Lab 4 (20th August 2012)

- The practical business development toolkit
- Knowledge exchange and networking

Lab 5 (17th September 2012)

- Preparing for the showcase

Mentoring and Support

- Teams supported to find their own business mentors
- Academic advisers involved in project approval
- Additional training and development available
 - through our existing suite of enterprise opportunities for researchers
 - arranged ad hoc to meet identified needs

Judging and Showcase Event

- ACTION 2012 projects will be presented and judged at a November showcase event
- Judgement will be based on the following criteria:
 - Clarity
 - Viability
 - Solution provided
 - Potential impact
 - The team

Prize fund

- There are two prizes available:
 1. First prize of up to £10,000 per team
 2. Second prize of up to £5,000 per team
- Prize money can be used on activities to aid your development as entrepreneurial researchers
- Subject to approval by the ACTION team

Who can enter?

- All postgraduate researchers and research staff at Newcastle University are eligible to apply for entry to Action 2012: Social Renewal
- Researchers from all disciplines are encouraged to apply; each will have skills and knowledge to bring to the team
- You must be available to attend all Lab sessions and the showcase

Selection criteria

- ACTION: 2012 is looking for creative individuals who are passionate about demonstrating the societal impact of their research
- The online application form will allow potential applicants to evidence their enthusiasm for, and track record of, generating impact from research
- In the event of oversubscription, EPSRC funded applicants will be given priority

How do I apply?

- To enter ACTION 2012: Social Renewal you will need to complete the online application form by 16 March 2012
- <http://forms.ncl.ac.uk/view.php?id=2882>

Questions?

The ACTION Team

- Gail de Blaquiere
- Elizabeth Scanlon
- Katie Wray

action2012@ncl.ac.uk

www.ncl.ac.uk/action2012

ACTION 2012: SOCIAL RENEWAL



An opportunity for postgraduate researchers and research staff at Newcastle University to explore a social renewal challenge, make our research make a difference and compete for a prize of up to £10,000.

As part of the University's commitment to excellence with impact, it has identified institutional challenge themes that address key societal issues.

Each successive theme is in:

- a research area in which the University has an international reputation for excellence, and one which addresses significant needs in many countries worldwide, and is particularly marked in our home region
- a subject in which the University has a tradition of engaging with the wider community, so that we have a thorough understanding of the issues beyond campus

The Societal Challenge for 2012 is **Social Renewal**

What do we mean by 'Social Renewal'?

Social renewal, as we conceive it, is about responding to the question:

"how can societies and communities (local, regional, national and international) thrive when faced with rapid, transformational change"?

Social change has, of course, always been present and has often been radical. But the need for societies to renew themselves arising from the sheer pace and globally interdependent nature of change has in recent times reached a new crescendo. Increasingly, social change has differential consequences for individuals, organizations and communities, increasing inequalities in: income, wealth, education, health and opportunity.

We are witnessing a nation struggling to keep up with the pace of global economic change and within that nation considerable variation in economic and social resilience, which can be traced back to the long decline in post-war Britain in manufacturing and mining. There is plain need for economic and social regeneration and for the hardest hit communities to become more fully engaged in the process.

Source: <http://www.ncl.ac.uk/socialrenewal/nisr.htm>

Impact of Research

Research Councils (including the Engineering and Physical Sciences Research Council, (EPSRC)) are focused on achieving impact. Impact is the demonstrable contribution that excellent research makes to society and the economy. Impact embraces all the extremely diverse ways in which research-related knowledge and skills benefit individual, organisations and nations by:

- fostering global economic performance, and specifically the economic competitiveness of the United Kingdom;
- increasing the effectiveness of public services and policy;
- enhancing quality of life, health and creative output.

The UK Research Councils highlight that 'to deliver impact, researchers and businesses need to engage and collaborate with the public, business, government and charitable organisations'. This provides both challenges and pressures to researchers who are seeking to measure the economic and social impact of their work.

Action 2012: Social Renewal benefits from EPSRC funding for training in Enterprise and Entrepreneurship. EPSRC are supporting the project and EPSRC funded researchers are especially encouraged to take part.

See the quote below from John Baird, Head of Knowledge Transfer at EPSRC, speaking of last year's ACTION 2011: Sustainability Programme:

"EPSRC wishes to ensure increased and accelerated impact and exploitation from EPSRC's investments. To help increase awareness and encourage innovative approaches to the exploitation of research, since 2007 EPSRC has provided additional (Roberts) funds to support training and/ or course development in the area of entrepreneurship. This funding has increased year on year to £3.2M in 2010.

Newcastle's ACTION 2011 aimed at exploring a sustainability challenge appears to be a welcome step in progressing this important agenda."

ACTION 2012: Social Renewal Competition

ACTION 2012 will represent an opportunity to engage Newcastle postgraduate research students (PGRs) and research staff with the concepts of enterprise and research impact whilst working on the societal challenge of Social Renewal. It will enable you to get away from your desk, collaborate and think like an entrepreneur in order to develop a commercial approach to your research.

ACTION 2012 is a programme in which PGRs and research staff work in teams, within a framework of support, to develop an interdisciplinary, commercial solution to a social renewal challenge by integrating their research and initiating internal and external collaborations. The programme is designed to help participants enhance the outcomes of their research. Academic members of staff, entrepreneurs and business professionals are welcome and encouraged to mentor and/or support teams.

ACTION 2012 will provide training and workshops to support PGRs and research staff as well as introducing other proven approaches (including adapting NESTA's Crucible Programme). This training is presented in a cohesive framework upon which PGRs and research staff can use their existing research to address the challenges of their own fields around our current societal theme of social renewal.

From identifying a problem, teams will be challenged to initiate work into the development of a prototype, video, model or other visual form and will compete with each other to win a prize of up to £10,000. The winning team will be awarded £2,000 per member (up to a maximum of £10,000) to be used by the recipients to aid their development as entrepreneurial researchers so increasing the impact of their research. A runner-up prize of up to £5,000 will also be awarded.

Timescales for ACTION 2012: Social Renewal

21 st February:	Launch event for all interested parties
16 th March:	Application deadline for participants
30 th March:	Successful applicants informed
18-19 th April:	Lab 1 (Residential). – Beamish Hall Hotel, County Durham Teams are formed and project themes discussed
End of April:	Teams introduced to academic advisors to discuss submission of draft project proposals
21 st May:	Lab 2 (Dove Marine Laboratory, Cullercoats)

18 th June:	Lab 3 (HaSS Postgraduate Training Suite)
End of July:	Academic Advisor reports on team status
20 th August:	Lab 4 (Great North Museum: Hancock)
17 th September:	Lab 5 (Devonshire Building)
14 th October:	Submission of written summary of the project in advance of final showcase
8 th November:	Pitch and Trade Fair Stand (with prototype, video, model or other visual form) to be assessed by internal and external judges. Showcase event to include trade fair of participants' product/service outcomes and presentation of prizes. (Great North Museum: Hancock)

Running alongside from April 2012: Training and development through existing suite of enterprise opportunities for research students and research staff. Ad-hoc training sessions will be delivered in response to participant demand.

Eligibility Criteria

All postgraduate researchers and research staff are eligible to apply to take part in ACTION 2012: Social Renewal. Researchers from all disciplines are encouraged to apply as each will have their own knowledge to bring to the team. Selection criteria will apply – see below.

How to Apply

To enter ACTION 2012: Social Renewal you will need to fill in the online application form by 16th March 2012. The form can be found at <http://forms.ncl.ac.uk/view.php?id=2882>

Selection Criteria

Participants will be selected on the basis of the information provided on the application form (details above).

1. All Participants must be either registered as a research student at Newcastle University or employed as a member of research staff at Newcastle University.
2. All Participants will need the permission of their supervisor/line manager to take part.
3. All Participants will need to be able to attend the residential training session at Beamish Hall Hotel on 18th & 19th April 2012 and the four non residential training days on the 21st May, 18th June, 20th August and 17th September 2012.
4. All Participants must be interested in joining a team involved in developing a social renewal project that is within the EPSRC remit (see pack for details).
5. All Participants will need to be available on 8th November 2012 for the final Showcase Event.
6. Participants will be selected on their enthusiasm for the project. We are looking for creative individuals passionate about demonstrating the societal impact of their research. The application provides space for you to describe your commitment to the project and we advise you to make full use of this facility.
7. In the event of oversubscription of applicants who fulfil the selection criteria, EPSRC funded research students and research staff will be given priority.

Teams

Teams will be between 4-5 members made up of research staff and research students and will be formed during the first training session at Beamish Hall Hotel on 18th & 19th April.

Judging

Judges will be selected to assess the final visual submissions and group presentations

Prizes will be awarded based on the following criteria:

- Clarity of the solution
- The business potential (viability, sustainability and profitability)
- The potential impact
- The creativity of the team

Prizes

There are two prizes available. A first prize of £2,000/team member (up to max of £10,000) and a second prize of £1,000/team member (up to max £5,000). The winning teams will be awarded the prize money to aid their development as entrepreneurial researchers. Opportunities identified will need the approval of the ACTION 2012 team before being funded.

Action 2012 Team

Website: **www.ncl.ac.uk/action2012**

E-mail: **ACTION2012@ncl.ac.uk**

Gail de Blaqui re – Postgraduate Skills Development Programme Manager (extn 5901)

Elizabeth Scanlon – Research Staff Development Advisor (extn 3987)

Katie Wray – Teaching Fellow in Enterprise (extn – 5183)

Sustainability information for Launch Event

Please return your name badge

Please recycle this documentation when you have finished with it

EPSRC and Social Renewal

Newcastle Institute for Social Renewal

<http://www.ncl.ac.uk/socialrenewal/nisr.htm>

What do we mean by ‘social renewal’?

Social renewal, as we conceive it, is about responding to the question:

“how can societies and communities (local, regional, national and international) thrive when faced with rapid, transformational change”?

Social change has, of course, always been present and has often been radical. But the need for societies to renew themselves arising from the sheer pace and globally interdependent nature of change has in recent times reached a new crescendo. Increasingly, social change has differential consequences for individuals, organizations and communities, increasing inequalities in: income, wealth, education, health and opportunity.

We are witnessing a nation struggling to keep up with the pace of global economic change and within that nation considerable variation in economic and social resilience, which can be traced back to the long decline in post-war Britain in manufacturing and mining. There is plain need for economic and social regeneration and for the hardest hit communities to become more fully engaged in the process. Increased entrepreneurial activity is one part of the solution, but in this there are commensurate challenges.

The Institute draws together current research based around seven main themes:

1. Leadership, Citizenship and Governance;
2. Entrepreneurship, Creativity and Innovation;
3. Heritage and Culture;
4. Identity, Diversity and Inclusion;
5. People, Place and Community;
6. Digital Innovation
7. Wellbeing and Resilience

This represents the very broad range of activity that takes place in academic schools across the Faculty of Humanities and Social Sciences here at Newcastle University.

What are the big questions facing society?

Through the Social Renewal theme, we aim to highlight and address issues such as stimulating entrepreneurship, social inclusion and exclusion, and raising levels of ambition and aspiration in school-children and their families, amongst many others. Events on the streets of some English cities in 2011 only serve to reinforce the importance of enhancing our understanding individual and collective responses to the forces shaping society and our towns and cities. The launch of our third theme and our programme of related events comes at a time when it has particular resonance with the general public and with policy-makers.

EPSRC Strategic Plan (2010)

http://www.epsrc.ac.uk/SiteCollectionDocuments/Publications/corporate/EPSRC_strategic_plan_2010.pdf

Our strategy will keep the UK at the heart of global research and innovation. It will provide the knowledge and skills vital to a healthy, sustainable and prosperous society.

Sustained investment in science and engineering provides the UK with the capability to tackle the challenges it faces today, and the unknown challenges it will face tomorrow.

Our Ideas Factory concept has applied new thinking to issues such as gun crime, security and productivity.

<http://www.epsrc.ac.uk/plans/deliveryplan/economicimpact/Pages/default.aspx>

Manufacturing the Future, Digital Economy, Energy and Healthcare Technologies are all crucial for the success and sustainability of the UK economy and as a proportion of our portfolio our investment in these themes will increase.

- Energy and Digital Technology are RCUK Cross-Council Themes
- Energy – social, environmental, economic and technical implications of energy research in order to understand future energy options.
- Digital Technology – transform lives through the novel design and use of information and communications technologies (ICT) and digital technology to deliver improved health and a more inclusive society.

Drivers:

- Ensure the companies and individuals benefit from the opportunities offered by novel uses of digital technologies.
- Promote research in new economic and business models to enable the UK to benefit from an increasingly global and borderless economy.
- Inform government policy by providing a long-term perspective on key social policy decisions and helping to transform the delivery of public services.
- Deepen our engagement with government at both the national and local levels, to ensure the opportunities for people to have control of their lives using IT are realised rapidly, but with appropriate ethical and security considerations.
- Provide research outputs to enable communities to improve their lives with digital technologies which enhance interaction.

EPSRC are a partner in all other cross-Council themes e.g .Living with Environmental Change, Global Uncertainties

<http://www.epsrc.ac.uk/SiteCollectionDocuments/Publications/corporate/EPSRCDeliveryPlan2011-15.pdf>

Research and Training Priorities (2011 – 2015) - Global, economic and societal challenge themes

Our vision is for the research we sponsor to help solve some of the most serious challenges facing the UK, including the need to build a strong, resilient economy, produce sustainable low-carbon energy, develop a resilient integrated national infrastructure and a healthy society with personalised healthcare for everyone.

Building the Digital Society

<http://www.epsrc.ac.uk/newsevents/casestudies/2011/Pages/digitalsociety.aspx>

Engineering and Physical Sciences Research Council (EPSRC) remit

Our remit covers engineering and the physical sciences: research in the areas of chemistry, engineering, information and communications technologies, materials, mathematical sciences and physics. We do not have any restrictions on application areas but the majority of the research we support must be in engineering and the physical sciences.

Responsive mode panels: To give you an idea of what we cover, research areas for our responsive mode panels include:

Panel	Research areas include:
Information and communications technology	Communications, computer science, user interface design, image and vision computing, human computer interaction, semiconductors, photonic and electronic materials and devices
Materials, mechanical and medical engineering	Acoustics, aerodynamics, control and systems engineering, sensors and instrumentation, robotics, soft and hard manufacturing, design engineering, mechanical engineering, medical engineering, biomaterials and tissue engineering, materials processing, and synthetic biology
Mathematical sciences	Pure mathematics, applied mathematics, mathematical statistics and applied probability, mathematical physics, and the mathematical aspects of operational research
Physical sciences (three parallel panels): Chemistry Materials Physics	Chemistry - organic and inorganic synthesis, physical, analytical and biological chemistry Materials – synthesis and characterisation of materials and materials modelling at the atomic scale Physics – atomic, molecular, optical and plasma physics, condensed matter physics, lasers, optics and surface science
Process, environment and sustainability	Process engineering, built environment and civil engineering, sustainable development, water supplies, waste and coastal engineering, transport management, energy impact and adaptation to climate change, energy generation and distribution and electrical engineering, and combustion

Information adapted from www.epsrc.ac.uk/funding/apprev/basics/Pages/remit.aspx

EPSRC programme landscapes – an overview of our entire £3.7 billion portfolio of grants and awards.

Research programme landscapes	
Cross-disciplinary interfaces	Basic technology, biological systems, bioprocess engineering, complexity science, fundamental biology, human health, technologies of the life sciences
Information and communications technology	Communications, computer science, electronic materials and devices, people and interactivity, photonic materials and devices
Research infrastructure	e-Science, high performance computing, international
Materials, mechanical and medical engineering	Aerospace and aerodynamics, control systems and robotics engineering, design engineering,

	instrumentation, including microsystems, manufacturing, mechanical engineering, sensors and acoustics, structural materials: metals and alloys, structural materials: polymers, composites and ceramics, synthetic biology
Mathematical sciences	Algebra and geometry, applied mathematics, mathematical analysis, mathematical aspects of operational research, mathematical logic and combinatorics, mathematical physics, statistics
Physical sciences	Analytical sciences, atomic, molecular and optice physics, catalysis, condensed matter physics, functional materials, physical chemistry, plasmas, lasers and optics, structural ceramics and inorganics, structural polymers, superconducting, magnetic and photonic materials, surface science, synthetic chemistry
Process, environment and sustainability	Built environment, process engineering, structural and ground engineering, transportation operations and management, waste and pollution, water and coastal engineering
Mission programmes landscapes	
Digital economy	
Energy	Bioenergy, conventional, demand, fuel cells, geothermal, hydrogen, infrastructure, marine, nuclear fission and fusion, solar, storage, sustainable vectors, transport, whole systems and cross council, wind
Nanoscience through engineering to application	Bionanotechnology, extreme and molecular nanotechnology, functional nanotechnology devices and machines, fundamental properties of nanomaterials, nanocharacterisation and nanometrology, nanodesign, nanofabrication, nanomanufacturing, nanomedicine, nanomodelling, nanotoxicology and the environment
Towards next-generation healthcare	
Better exploitation across EPSRC	

Information adapted from www.epsrc.ac.uk/research/landscapes/Pages/default.aspx

Important Information for ACTION 2012: Social Renewal Participants:

ACTION 2012: Social Renewal is funded by the EPSRC for training in Enterprise and Entrepreneurship. Within Newcastle University's societal challenge theme of Social Renewal, ACTION projects should fit with this remit – Engineering and Physical Sciences Solutions for Social Renewal. You will be asked to provide information about your projects link to the EPSRC themes during the programme to ensure that there is a relationship. Please feel free to discuss this further with the ACTION 2012 Team.

SOCIAL RENEWAL LAUNCH YEAR EVENTS CALENDAR 2012

[As at 20 February 2012]

Month	Date	Activity	Lead Person
January			
		Voices of the North –programme of activities Simply Cracking Good Stories’ – day-long workshop for new and experienced writers on how to use fiction writing to help low-literate immigrant adults (with Margaret Wilkinson and Martha Young-Scholten, ELLL)	Clare Wright
February			
	7th	Social Renewal Launch Event Chief Exec of the RSA, Matthew Taylor (keynote speaker) Dinner and debate	Nick Wright Gerry Docherty
	21st	Launch of the ACTION 2012 Entrepreneurial Researchers programme “How can people, communities and societies thrive in a world of rapid and complex change?” http://research.ncl.ac.uk/action2012	Katie Wray SAgE
	21st	Claire Tomalin ; Public Lecture Topic of Charles Dickens (200th anniversary of his birth). Presented in conjunction with the Lit and Phil	Umbereen Rafiq
	22-24	“Tipping Point” programme of cultural events/mini festival; linked with Northern Stage. <i>[also part of the Sustainability launch year programme]</i>	Anne Buckle Eric Cross
March			
	12 March to 14 April	The Great North Build Great North Museum: Hancock, The Great North Build is a highly interactive exhibition that invites people to design and build a town out of LEGO and experience the challenges faced by today's town planners. It is open to members of the public, families, schools and organisations	Eric Cross Lucy Jenkins
	TBC	“Homes around the World” Photography exhibition running alongside the above	Eric Cross Lucy Jenkins
	13th	Historical relevance of Social Renewal MEMS Keynote Lecture Series: Conflict, Renewal and Social Change, Cathy Shrank (Sheffield) Public lecture in association with the Lit and Phil 'Bolting out the truth? Sixteenth-century writing and the commonweal'	Ruth Connolly SELLL
	21st or 23rd TBC	Joint Policy Research Conference with the City Council	John Goddard Louise Kempton CURDS
	28th/29th	“Localism: social renewal or an ideological choice?” 2 day workshop Exhibition Area, 4th Floor, Claremont Tower, Newcastle University The purpose of this workshop is to provide a platform for theoretically-informed debates about how localism is	Simin Davoudi Ali Madanipour APL

		understood from social, economic, environmental, political, spatial and cultural perspectives. What are the key debates and tensions about, and the applications and implications of different forms of localism in each perspective? While the contributions are expected to engage with the UK government's current emphasis on localism, the aim is to discuss this in the context of broader social and political developments.	
	TBC	Event around Educational Entrepreneurship and Social Renewal	James Tooley
	TBC	Voices of the North – programme of activities ‘Enriching voices’ – half-day event with early years teachers and carers to showcase research on enhancing language development in early years, and spotting language impairment in diverse communities (with Helen Stringer and Carolyn Letts, ECLS)	Clare Wright
April			
	TBC	Poetry Competition to be launched Spring 2012 and completed /published autumn 2012	Linda Anderson
	TBC	Creative writing workshops for the over-50s. Reminiscences of Newcastle; linked to MRC Wellbeing pilot study.	Linda Anderson
	17th	Historical relevance of Social Renewal MEMS Keynote Lecture Series: Conflict, Renewal and Social Change Mark Knights (Warwick) Public lecture in association with the Lit and Phil	Ruth Connolly SELLL
	TBC	Renewing Communities blighted by crime and anti-social behaviour One day seminar	Kevin Brown Law
		Fairness Commission report due to be published	Vice-Chancellor
	Dates TBC One in Spring and one in Autumn	Public Lectures: 1) Is ‘social renewal’ good for health? We will seek a high profile speaker, such as Professor Hilary Graham, Professor of Health Sciences and Director of the Public Health Research Consortium, and visiting Professor at the UCL Institute of Child Health. 2) Learning for change “Radical democratic Education for Social Renewal” Professor Michael Fielding	Martin White Gail Edwards
May			
	1st	MEMS Keynote Lecture Series: Conflict, Renewal and Social Change Historical relevance of Social Renewal Alex Shepherd (Glasgow) Public lecture in association with the Lit and Phil	Ruth Connolly SELLL
	1st	‘Social Renewal and Education: The Great North Curriculum?’ In the Beehive. Supported by URC funds	David Leat
	8th	Lord Patten Lecture Inaugural lecture in a series in Lord Patten’s name	Umbereen Rafiq

	TBC	“Making sense of the Big Society” One day workshop (2012) followed by seminar in House of Commons (2013)	William Maloney Nick Randall Alistair Clark
June			
	TBC	Social renewal in the European countryside. One day conference	Guy Garrod
July			
		OLYMPIC GAMES Events to be arranged around Newcastle hosting some football games at Cochrane Park	Charles Harvey Abi Kelly
	TBC	GNM “Stories of the world” project summer 2012. Literary events around home and homelessness tied to the above	Linda Anderson
	TBC	Renewing Communities blighted by crime and anti-social behaviour One day seminar	Kevin Brown Law
	TBC	Historical relevance of Social Renewal Symposium on Social Renewal	Ruth Connolly SELLL
September			
	TBC	“ Mental health and social inclusion : Reassembling the self” Exhibit and Workshop	Anya Hurlbert
October			
	TBC	Film Festival- Autumn 2112	Simon Philpott
		Black History Month	
	5th 7.00- 9pm	The conference of the National Union of Journalists (NUJ) will be held at Newcastle Civic Centre in the first week of October 2012. This coincides with Black History Month and each year in October the NUJ's Black Members Council organises the Claudia Jones Memorial Lecture to celebrate her contribution to Black British journalism. This is the first time the lecture will take place during the NUJ conference. Claudia Jones Memorial Lecture will be held in the King's Hall where Dr King received his honour.	David Baines
November			
	8th	ACTION 2012: Social Renewal Showcase Event (Entrepreneurial Researchers) Great North Museum: Hancock	Katie Wray SAGe
	13th	45th anniversary of the University conferring an honorary doctorate on Dr Martin Luther King on November 13, 1967. Eric Cross is working with the BBC on a proposal for a documentary about that event to be made next year.	Eric Cross
	TBC	Work with young disabled people leading to the production of a film and its dissemination. Linked to Newcastle University hosting the European Academy for Childhood Disability in 2013	Janice McLoughlin Jacqui Rodgers
	TBC	Annual David Goldman Lecture –Business School	
	TBC	Santander week Business Enterprise week	Business School
	TBC	Possible Visit by Gurcharan Das.	Charles Harvey

		Indian author, commentator and public intellectual. His international bestseller, <i>India Unbound</i> , is a narrative account of India from Independence to the global information age, and has been published in many languages and filmed by BBC. <i>Events will also be arranged around his visit</i>	
	TBC	Free Thinking Festival (at the SAGE)	Abi Kelly Charles Harvey
	TBC	“Great Debates” event with local schools	Gemma Kirkbride
December			
	TBC	“Making Industry in Schools” A networking event to enable the generation of new knowledge and understanding about school-industrial partnerships	Fiona Whitehurst Liz Todd
	TBC	Social Renewal Honorary Degrees Ceremony “End of launch year” dinner in Great North Museum	Gerry Docherty Eric Cross
	TBC	Social Enterprise Conference In collaboration with Students in Free Enterprise (SIFE) and Cynergy [communications, events & design to change and improve lives] http://www.cynergy.co.uk	Gerry Docherty

Ruth Draper
22/02/2012